

Table: ABM168  
Cable tray: ABK1160

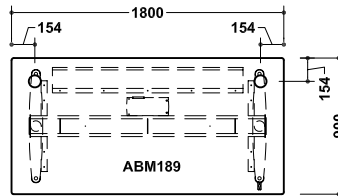


Table: ABM189  
Cable tray: ABK1180

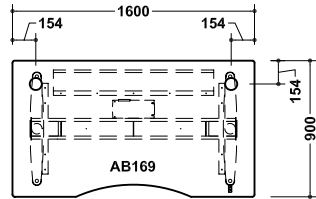


Table: AB169  
Cable tray: ABK1160

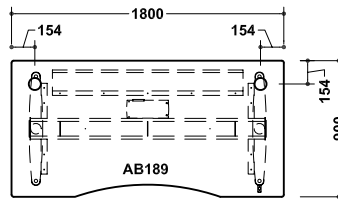


Table: AB189  
Cable tray: ABK1180

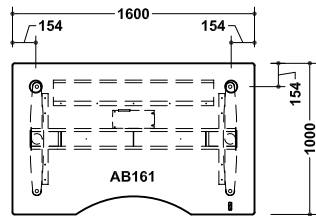


Table: AB161  
Cable tray: ABK1160

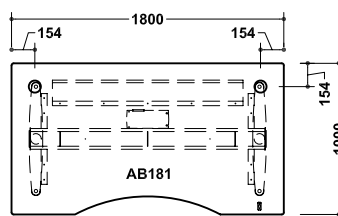


Table: AB181  
Cable tray: ABK1180

## Placement of hole for cable access $\varnothing 60$ mm or $\varnothing 80$ mm on Aura 1000 series

Article number on table, excl. cable tray.

For one hole, please state if you want right or left placement.

For two holes, the placement will be like the illustrations on this page.

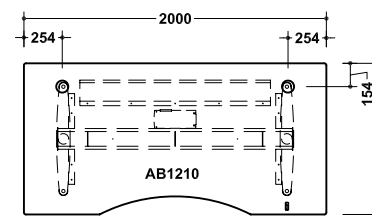


Table: AB1210  
Cable tray: ABK1180

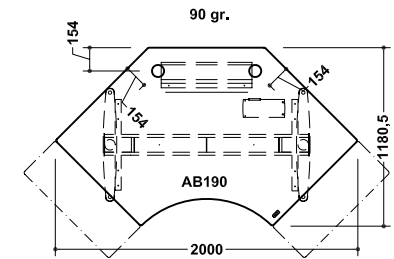


Table: AB190  
Cable tray: ABK1140  
Side table, left: AB18V  
Side table, right: AB18H

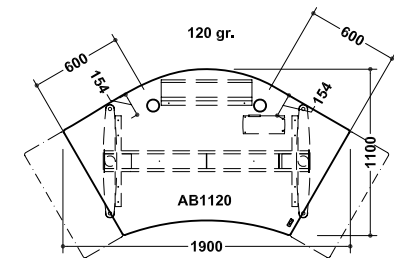


Table: AB1120  
Cable tray: ABK1140  
Side table, left: AB18V  
Side table, right: AB18H

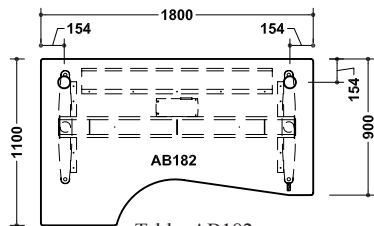


Table: AB182  
Cable tray: ABK1180

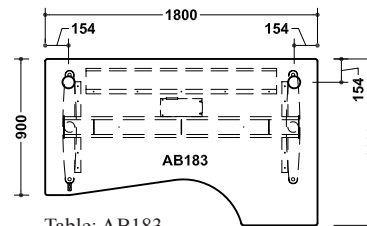


Table: AB183  
Cable tray: ABK1180

Smedeholm 16, 2730 Herlev. Tlf. 44501212. Fax. 44501213. E-mail herlev@bondo.biz

Kunde Bondo Kontormøbler as  
Sag Aura Arbejdsbord serie-1000  
Emne Oversigt, placering af kabelgennemføring



Tegn.	BK576-05	Rev.	00
Dato	6-5-08	Mål	1:35
Rev.dato		Sign.	O. Puch

Denne tegning er vor ejendom og må ikke kopieres, udnyttes eller overlades til uvedkommende